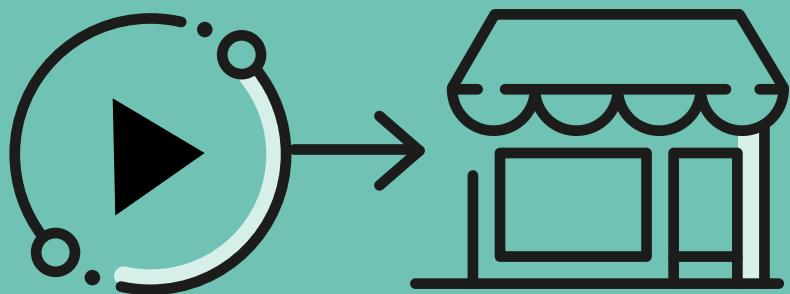


Back in business

Wishing for the best,
but preparing for the worst





Are you ready to resume your business?

The past months brought unprecedented changes worldwide, due to the COVID-19 pandemic. Life as we knew it before 16 March 2020 will not look the same, regardless if you are coming back into your office or reopening your shopping centers.

Thus, the two main questions that do not let us sleep at night are: **what measures should be taken when our activity restarts** and **what will happen if we fail to implement them seamlessly?**

Knowing the answer to these dilemmas will help all businesses onboard for the new reality post-COVID-19.



01

02

03

04

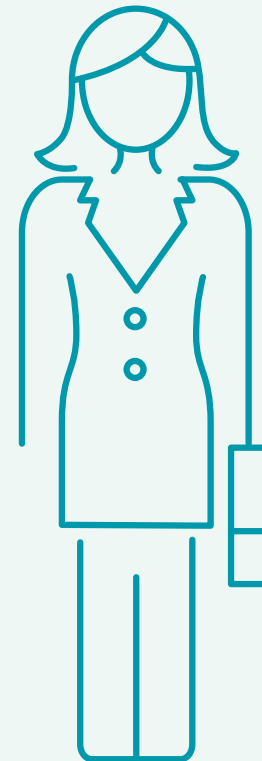
05

Since the authorities did not (and probably will not) provide an exhaustive list of measures which would guarantee a totally safe return to business as usual, each leadership team should prepare its own set, by analyzing:

- the liability to which the company & management are exposed
- the vulnerability to risks depending on the circumstances

Dos

- ✓ expect the unexpected
- ✓ evaluate your **vulnerability to risks** in a timely manner
- decide on the **set of measures** to be taken following a thorough technical and legal **assessment** on their efficiency **and implications**
- ✓ **quantify** the risks & consequences before & after measures are taken
- ✓ establish and implement a **tailored** plan of measures
- ✓ **reasses** your risks & vulnerabilities after the measures are implemented



Don'ts

- ✓ make a subjective interpretation of the measures to be taken
- take measures just because they are popular on the market or because of public pressure
- ✓ use resources (time & money) on measures unless you know exactly what risks & liabilities they are mitigating
- ✓ treat two premises / locations the same – each of them needs tailored attention



01

02

03

04

05



How would you be affected?

Here are some examples about how risk & liability could impact your organization & leadership in the context of reopening your business:

Change of the access ways in terms of length, direction etc. requires an update of ISU permits

Potential issues:

Health and safety obligations are applicable also for the employees working in other premises than their office

Failure to prepare an informative note on the processing of personal data



Exposure

- ✓ Sanctions of up to 100.000 lei
- ✓ Business suspension
- ✓ Criminal liability
- ✓ Fines calculated as a percentage of the turnover
- ✓ Ineffectiveness of insurance policies



01

02

03

04

05



How can we help?

Our tool is prepared by a multi-disciplinary task force (doctors, engineers, lawyers, architects, facility specialists, fire & safety experts) and will help you with:



assessing all types of areas in your office / shopping center based on the contamination risk



quantifying your vulnerability to the risks for each type of area



indicating the measures (either mandatory or recommended) for each type of area



performing a **scoring** for each measure depending on its overall efficiency in mitigating the risks

Outcome

you will know your level of **vulnerability to risk** at this date – the **initial score**

you will be able to choose the **measures best suitable** for mitigating the risks

at a later stage, once the measures are implemented, we can quantify again your risk & vulnerability and provide the **final score**

Our tool is a living instrument insofar as it will not only provide you with an initial assessment, but rather:



the matrix will provide a **scoring** of the level of risk & vulnerabilities as **of the current date**



once new measures will be imposed by the public authorities, the matrix will be **updated**



considering our rankings, you can decide & choose **the most suitable measures** for your business



upon request, we can assist with legal & technical input during the implementation of your selected measures



once these measures are implemented, we can reassess the level of risk & vulnerabilities and provide the **final scoring**



01

02

03

04

05



Who we are:

Irina Dimitriu

Legal Partner

E-mail: iridimitriu@reff-associates.ro

Alexandru Stanescu Baccela

Partner & Head of design

Waltmann Architecture Bureau

E-mail: baccela@waltmann.ro

Simona Iacob

Senior Managing Associate

E-mail: siacob@reff-associates.ro

Catalina Stroe

Managing Associate

E-mail: cstroe@reff-associates.ro

Anca Melinte

Managing Associate

E-mail: amelinte@reff-associates.ro



01

02

03

04

05



Reff & Associates SCA is a law firm member of Bucharest Bar, independent in accordance with the Bar rules and represents Deloitte Legal in Romania. Deloitte Legal means the legal practices of Deloitte Touche Tohmatsu Limited member firms or their affiliates that provide legal services. Visit the global Deloitte Legal website <http://www.deloitte.com/deloittelegal> to see which services Deloitte Legal offers in a particular country.